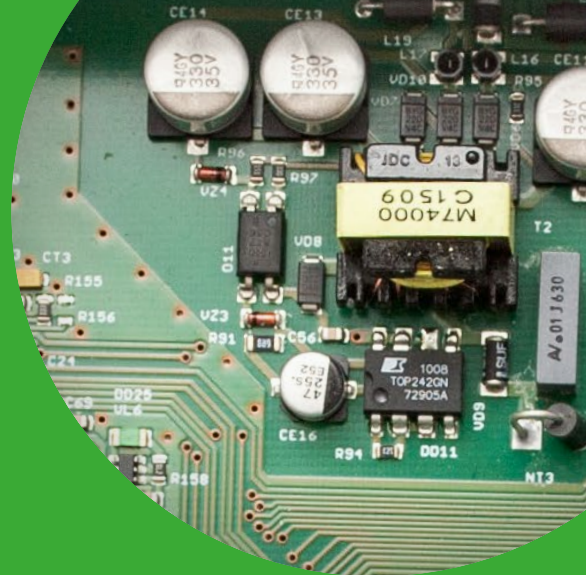


Lifts



elevator door control **VTA-DOOR-CAN2**

The control unit is designed for controlling three-phase permanent magnet motors (EC motors) and asynchronous motors with a rated power of up to 250 W. It is supplied together with the motor and photocell as a complete assembly for the lift door.

Key features:

- simple and clear settings according to parameters
- the units can be parameterized using the user interface on the PC via RS 485
- sophisticated event and fault diagnostics
- for a quick overview of the individual device status, the units are equipped with LED signalling

Technical parameters:

- power supply 230 V + 10 % - 15 %, 50 Hz/60 Hz
- outputs resistant to short circuit and overload
- engine types
 - asynchronous
 - EC motor
- operating temperature range 0 to 50 °C
- speed of opening and closing the door adjustable according to parameters
- door opening/closing frequency 400/hr
- adjustable closing force



BETACONTROL

Beta Control s.r.o.
Černého 829/58, 635 00 Brno-Bystrc
Czech Republic

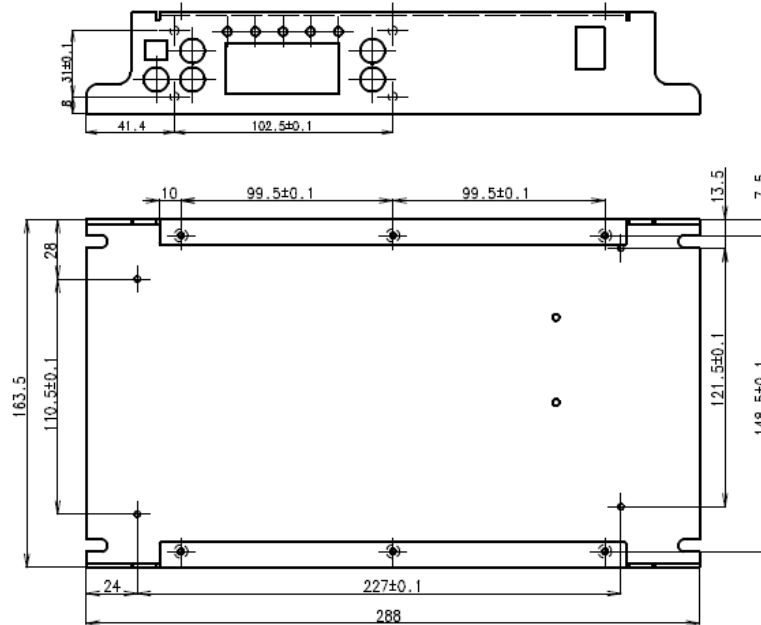
obchod@betacontrol.cz
www.betacontrol.cz

VTA-DOOR-CAN2

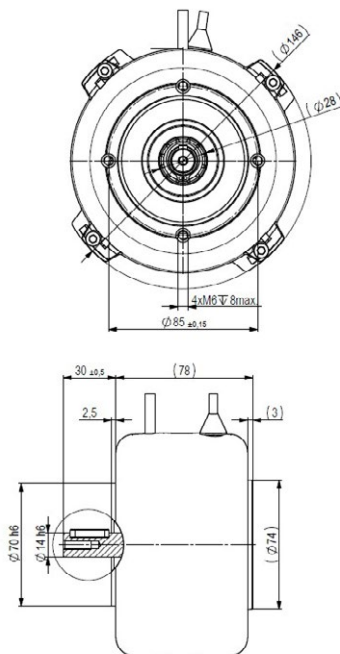
Dimensional diagrams of individual components.



Dimensional diagram of the control unit



Dimensional diagram of the EC motor



Dimensional diagram of an Asynchronous motor

